

*Therapeutic and diagnostic devices based
on very high frequency and extremely low
intensity electromagnetic radiation*

A. CHWALEBA,
Military University of Technology



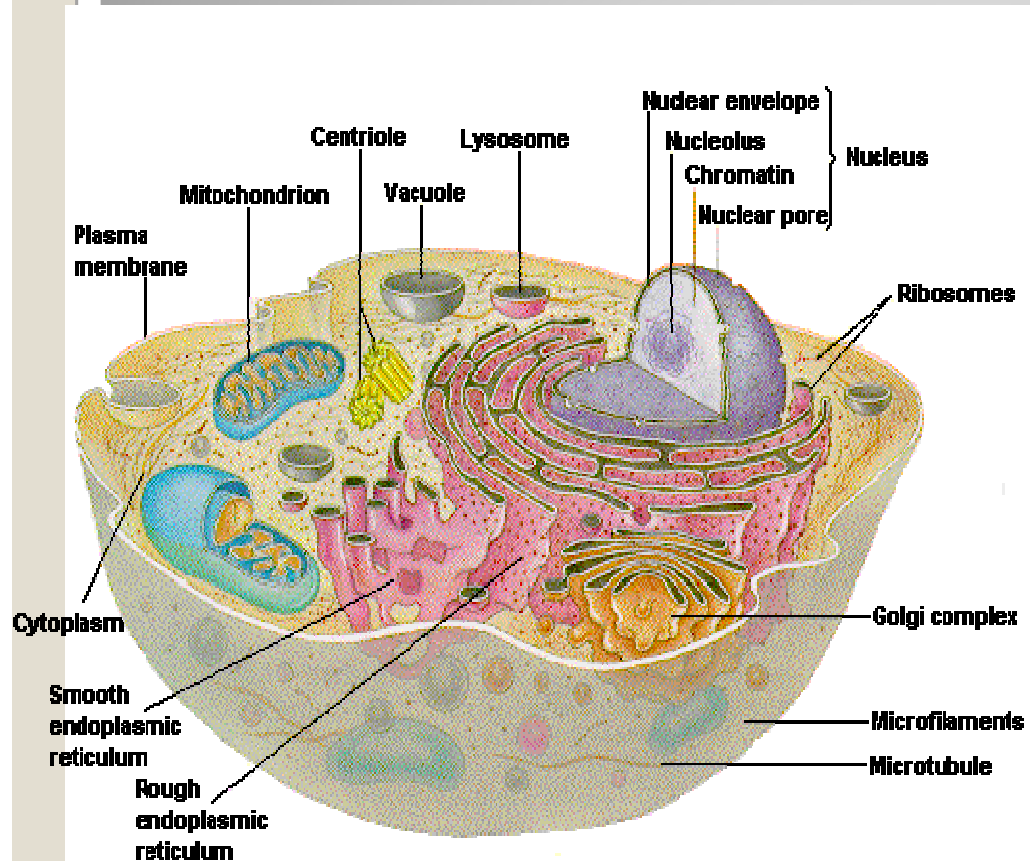
KAPITAŁ LUDZKI
NARODOWA STRATEGIA SPÓJNOŚCI

UNIA EUROPEJSKA
EUROPEJSKI
FUNDUSZ SPOŁECZNY

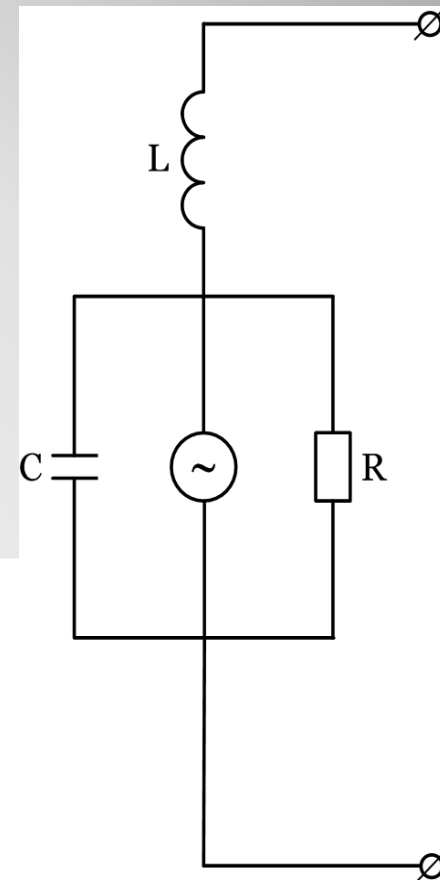


Projekt współfinansowany przez Unię Europejską w ramach Europejskiego Funduszu Społecznego

Therapeutic and diagnostic devices based on very high frequency and extremely low intensity electromagnetic radiation – A. CHWALEBA, Military University of Technology



≈



Cell of human body and its simplified electric model

Therapeutic and diagnostic devices based on very high frequency and extremely low intensity electromagnetic radiation – A. CHWALEBA, Military University of Technology



Diagnostic kit to express diagnostics

Therapeutic and diagnostic devices based on very high frequency and extremely low intensity electromagnetic radiation – A. CHWALEBA, Military University of Technology

ABP graphic image

Conductivity value of cell structure

Conductivity value of humoral environment



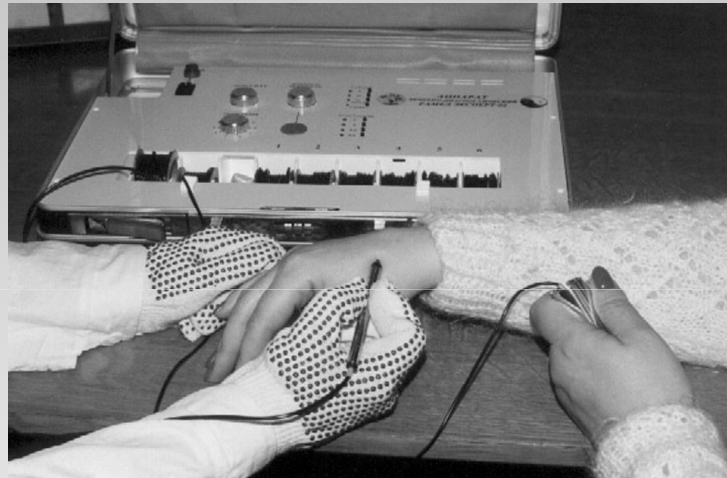
ABP anatomic relation

Optimal pressure for ABP

ABP sign and measurement results

View of ABP admittance measurement results in express diagnostics

Therapeutic and diagnostic devices based on very high frequency and extremely low intensity electromagnetic radiation – A. CHWALEBA, Military University of Technology



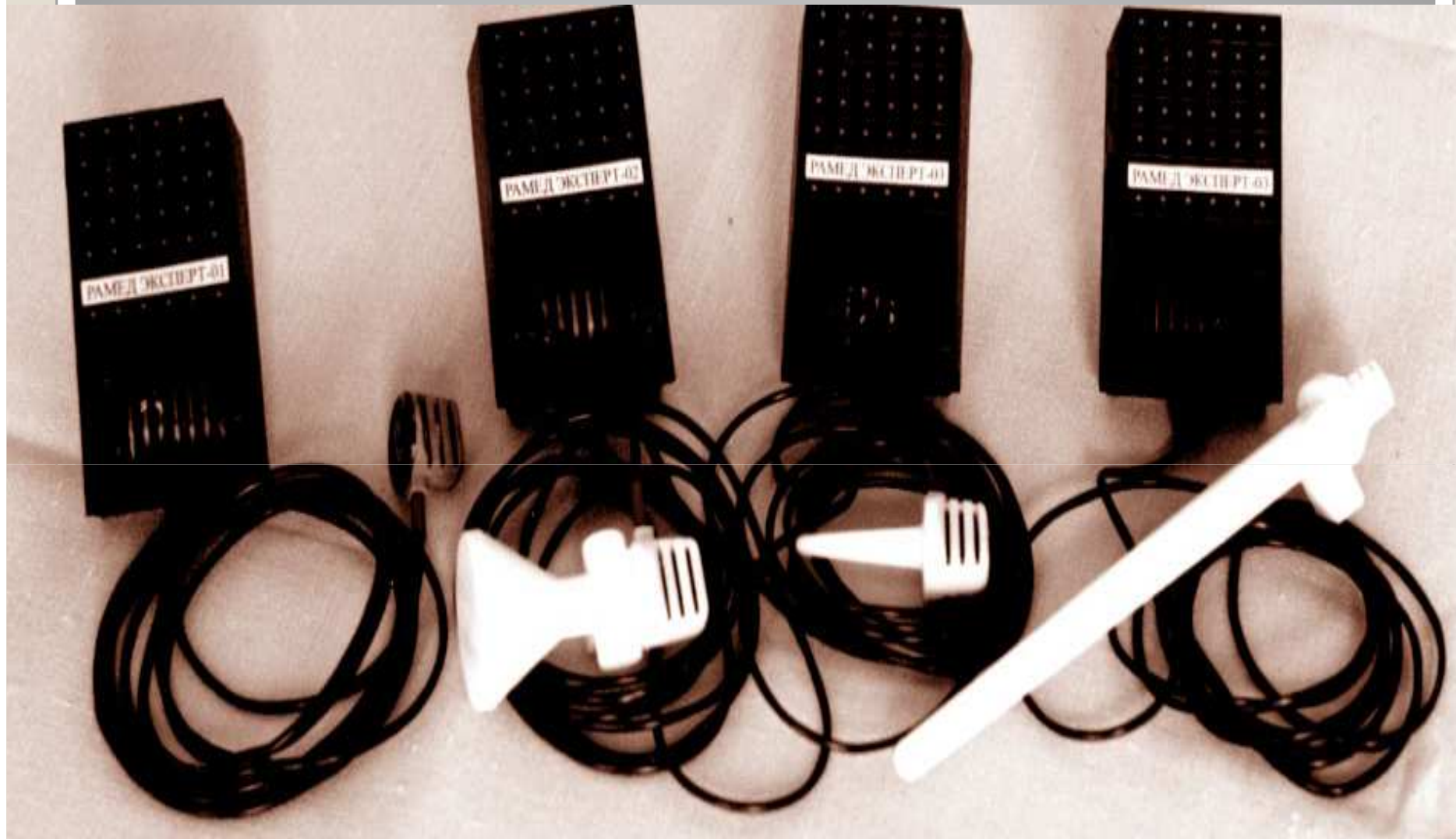
Admittance measurement in active biological point (ABP)

Therapeutic and diagnostic devices based on very high frequency and extremely low intensity electromagnetic radiation – A. CHWALEBA, Military University of Technology



Model of therapeutic kit

Therapeutic and diagnostic devices based on very high frequency and extremely low intensity electromagnetic radiation – A. CHWALEBA, Military University of Technology



„point”

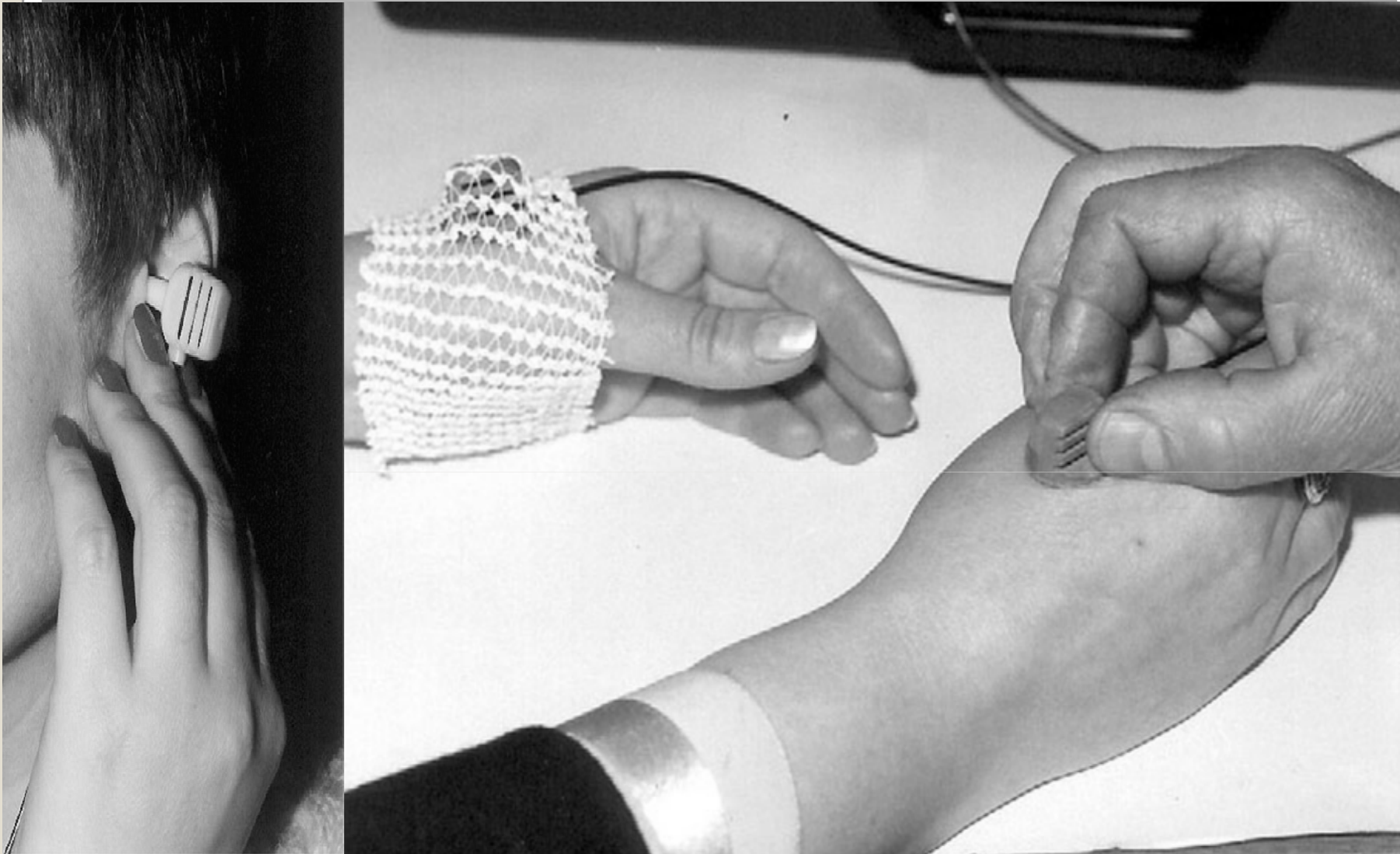
„tube”

„probe”

„D-probe”

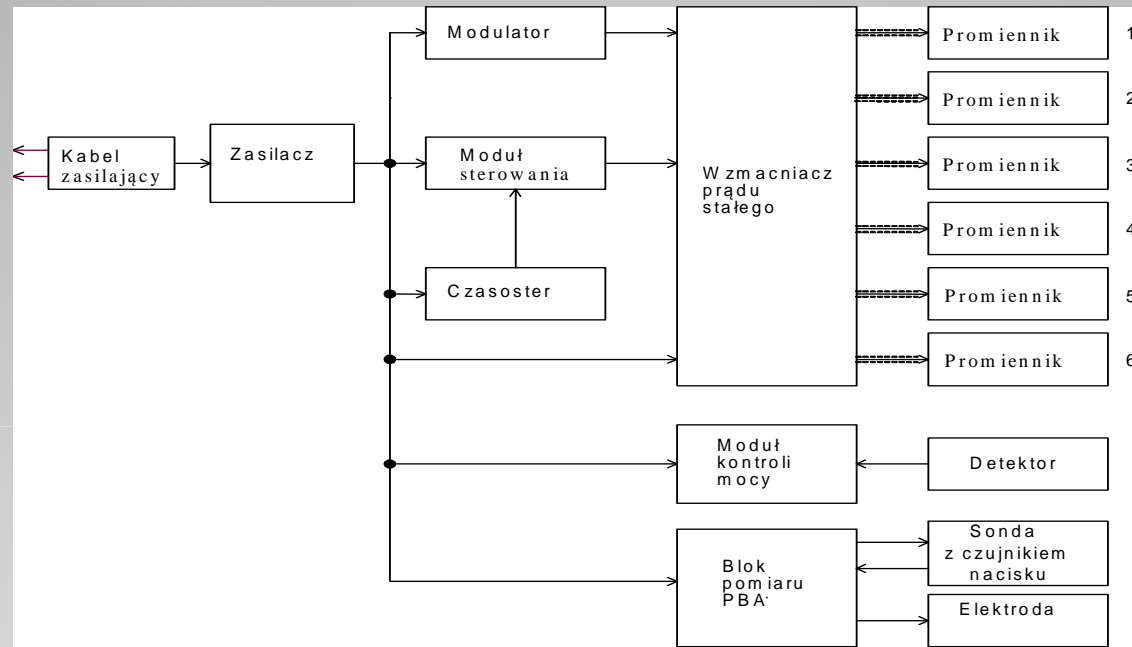
One-channel multifunctional microwave radiators

Therapeutic and diagnostic devices based on very high frequency and extremely low intensity electromagnetic radiation – A. CHWALEBA, Military University of Technology



Exemplary application of microwave radiators
for ABP irradiation

Therapeutic and diagnostic devices based on very high frequency and extremely low intensity electromagnetic radiation – A. CHWALEBA, Military University of Technology



Functional diagram of diagnostic – therapeutic apparatus

Therapeutic and diagnostic devices based on very high frequency and extremely low intensity electromagnetic radiation – A. CHWALEBA, Military University of Technology

Parameter name	Designed apparatus	Products			
		„Kindling 2000”, Germany	„Diaterapunkter”, Germany	„EAV-Dermotron” Germany	„Medissa-2” Ukraine
Prope signal voltage, not more than [V]	0,09	1,2-2,0	2,0	2,0	4,5
Prope signal	AC	DC	DC	DC	DC
Current intensity during diagnostic procedure, not more than [μ A]	1	15	12	15	15
Appearance, presentation, elaboration, information recording	digital	analogue	analogue	analogue	analogue
Network cooperation possibilities without additional data working	yes	deficiency	deficiency	deficiency	deficiency
Weight, not more than [kg]	1,2	5,0	11,55	3,9	5,0



KAPITAŁ LUDZKI
NARODOWA STRATEGIA SPÓJNOŚCI

UNIA EUROPEJSKA
EUROPEJSKI
FUNDUSZ SPOŁECZNY



Projekt współfinansowany przez Unię Europejską w ramach Europejskiego Funduszu Społecznego